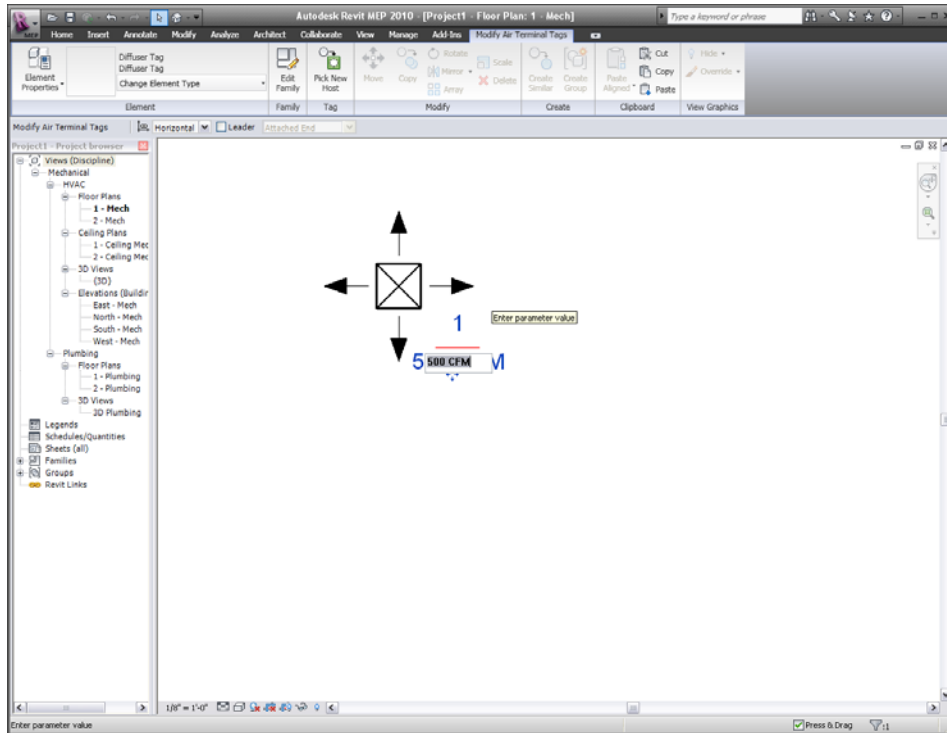
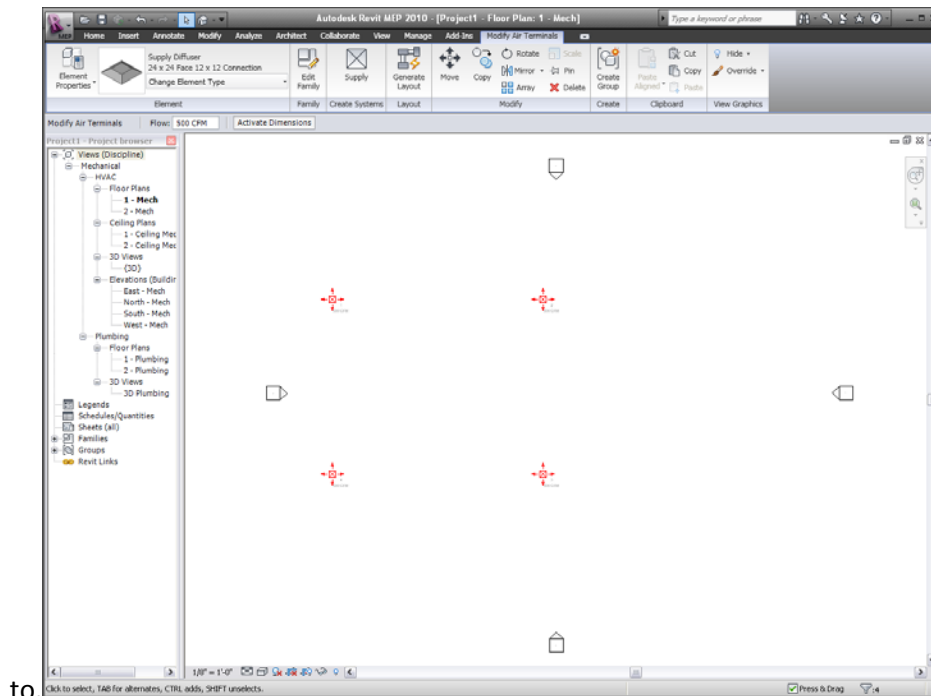


**Abstract:** Streamlining the process of placing and sizing ducts in Revit MEP.

1. Place Air Terminals in location. (Make sure they are at the correct offset)
2. Specify each Air Terminals CFM to be delivered or removed from the space

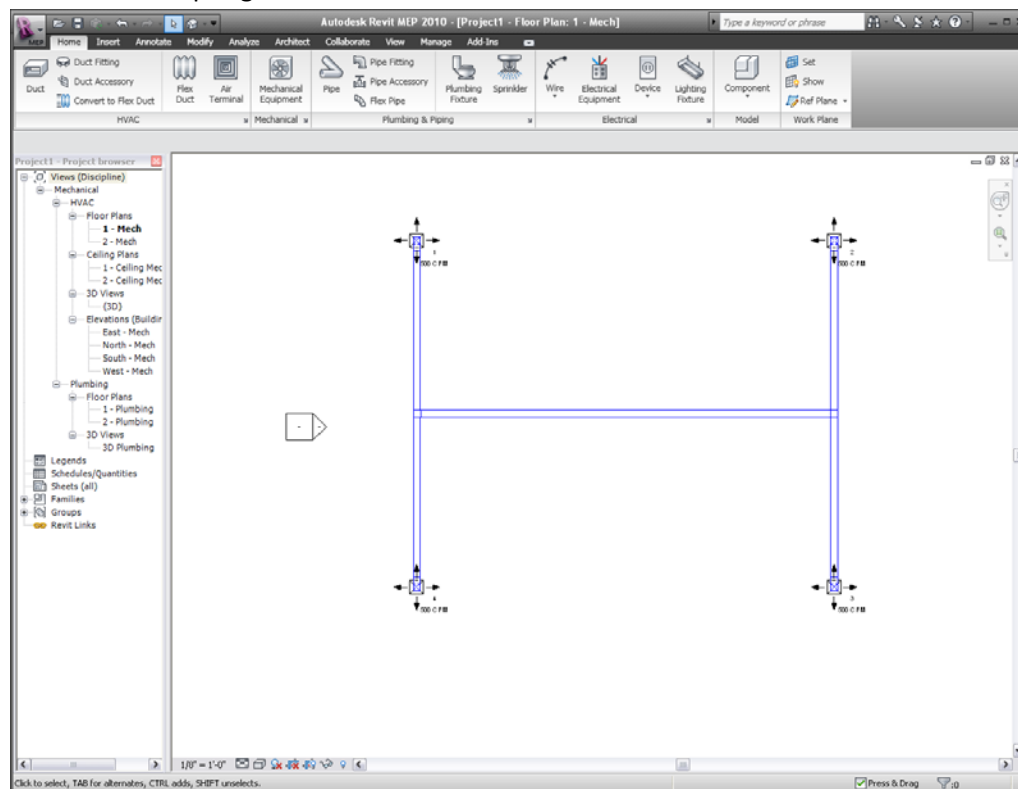


3. To have Revit MEP automatically show and place options for duct work, select the air terminals you wish to connect ducts

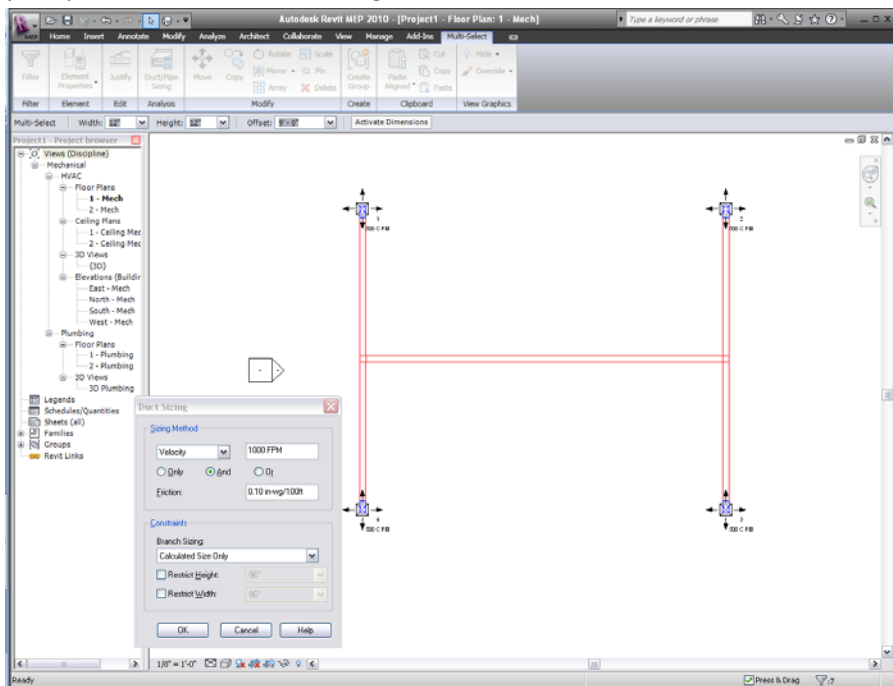


to.

4. Next click "Generate Layout" and scroll through the suggested solutions to figure out what layout will be best for your design. After clicking "Finish Layout" the ducts can be adjusted without interrupting duct connections.



5. To make sure that these ducts are sized per ASHRAE standards for friction losses and fpm recommendations, select the ducts and click “Duct/Pipe Sizing” icon that will pop up and choose your parameters before clicking “OK”



6. Place a Air Handler Unit and to connect it to your duct distribution system select the AHU and click “Connect Into” and choose a duct.
7. Continue to apply this process to your design project.